

Master of Optometry-II Examination**Contact Lens****Date : 01-04-2019, Monday]****[Max. Marks : 100****Time : 3 Hours]**

- Instructions :** (1) Figure to the right indicate marks.
(2) Write legibly.
(3) Draw diagrams wherever necessary.
(4) Use separate answer book for each sections.

Section A:

Answer any two out of three:

(2X20)

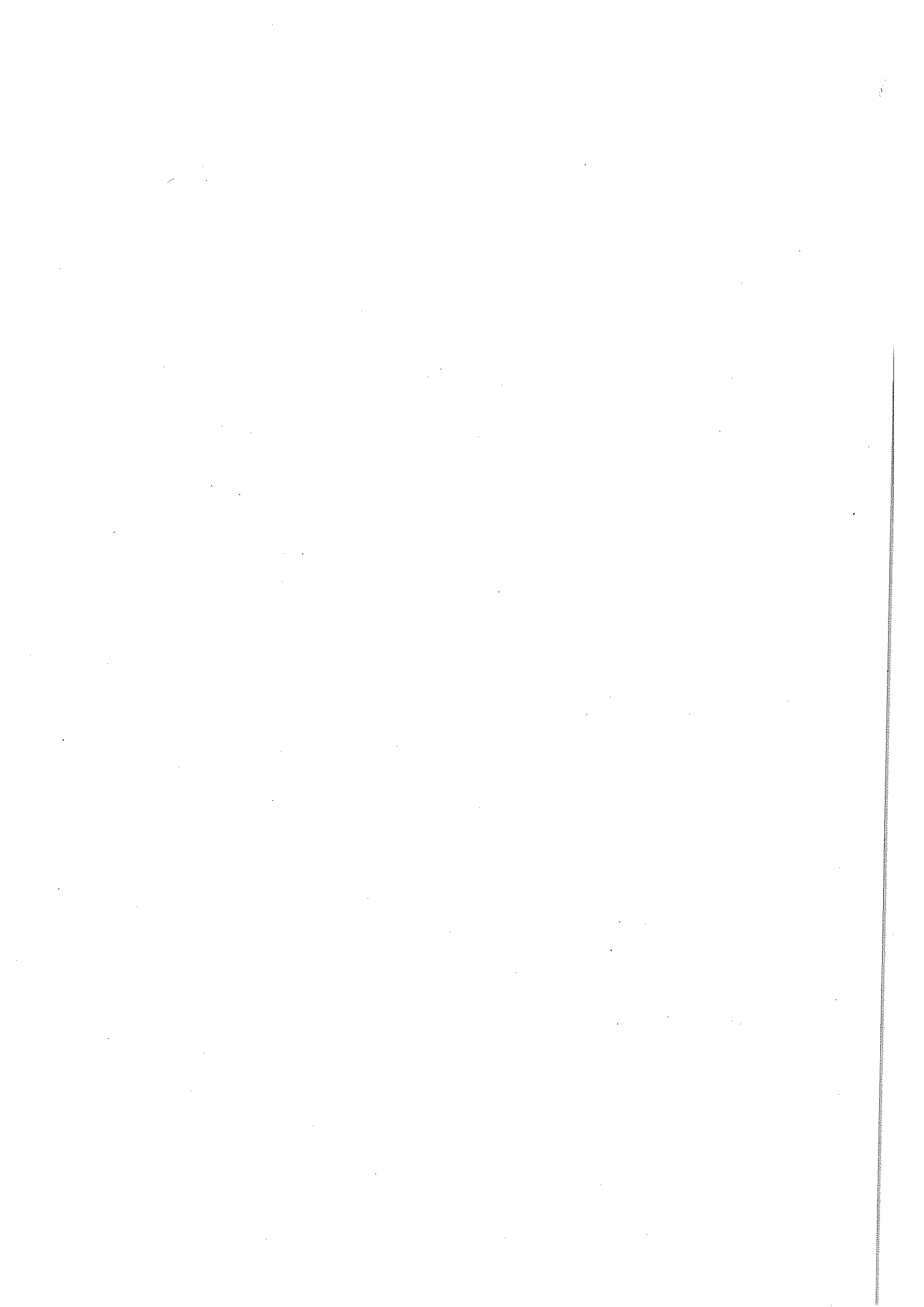
1. What are the various materials used to manufacture RGP contact lenses? Explain each with advantage and limitations. Write detail about methods of contact lens manufacturing with advantages and limitation.
2. A patient, who wears conventional soft contact lens, complains of sudden reduction in lens tolerance and wearing time in both eyes, as well as burning and stinging upon lens insertion. Slit lamp bio microscopy reveals generalized conjunctival hyperaemia and diffuse corneal staining. What is the MOST likely cause of his problems?
 - i. Write about differential diagnosis
 - ii. Justify your diagnosis
 - iii. Management strategies
3. Write in brief about hydrogen peroxide H₂O₂ disinfecting system. Write about components of multipurpose solutions for Soft contact lens in details.

Section B:

Answer any six out of seven:

(6X10)

1. Write about diagnostic criteria and signs of keratoconus. Explain contact lens management of keratoconic eyes
2. Explain bandage contact lenses. List 5 different conditions where we may use such lenses and explain its benefits for the listed conditions
3. What are the various designs of bifocal contact lenses? Explain with example
4. What are the various parameters you will specify while writing the prescription order for lab? write a format of order form. What are the parameters of RGP lenses you can verify in clinic? How you can measure them.
5. Write how to decide follow up schedule in different modalities of contact lenses available in market
6. How will you manage a unioocular Aphakic child of 3 yrs of age who have recently undergone cataract surgery because of trauma? What are the various points you will keep in mind before suggesting contact lens to the patient. Write about lens material selection criteria.
7. Write about hypoxic ocular changes due to contact lens wear



Master of Optometry-II Examination
Clinical Optometry & Basic Science

Date : 03-04-2019, Wednesday]
Time : 3 Hours]

[Max. Marks : 100

- Instructions :** (1) Figure to the right indicate marks.
(2) Write legibly.
(3) Draw diagrams wherever necessary.

Q.1. Write answers to the following in detail (Any Two)

(40)

1. Define blepharitis.

Describe types with clinical features

How will you manage blepharitis?

2. Enumerate different methods of examination of posterior segment.

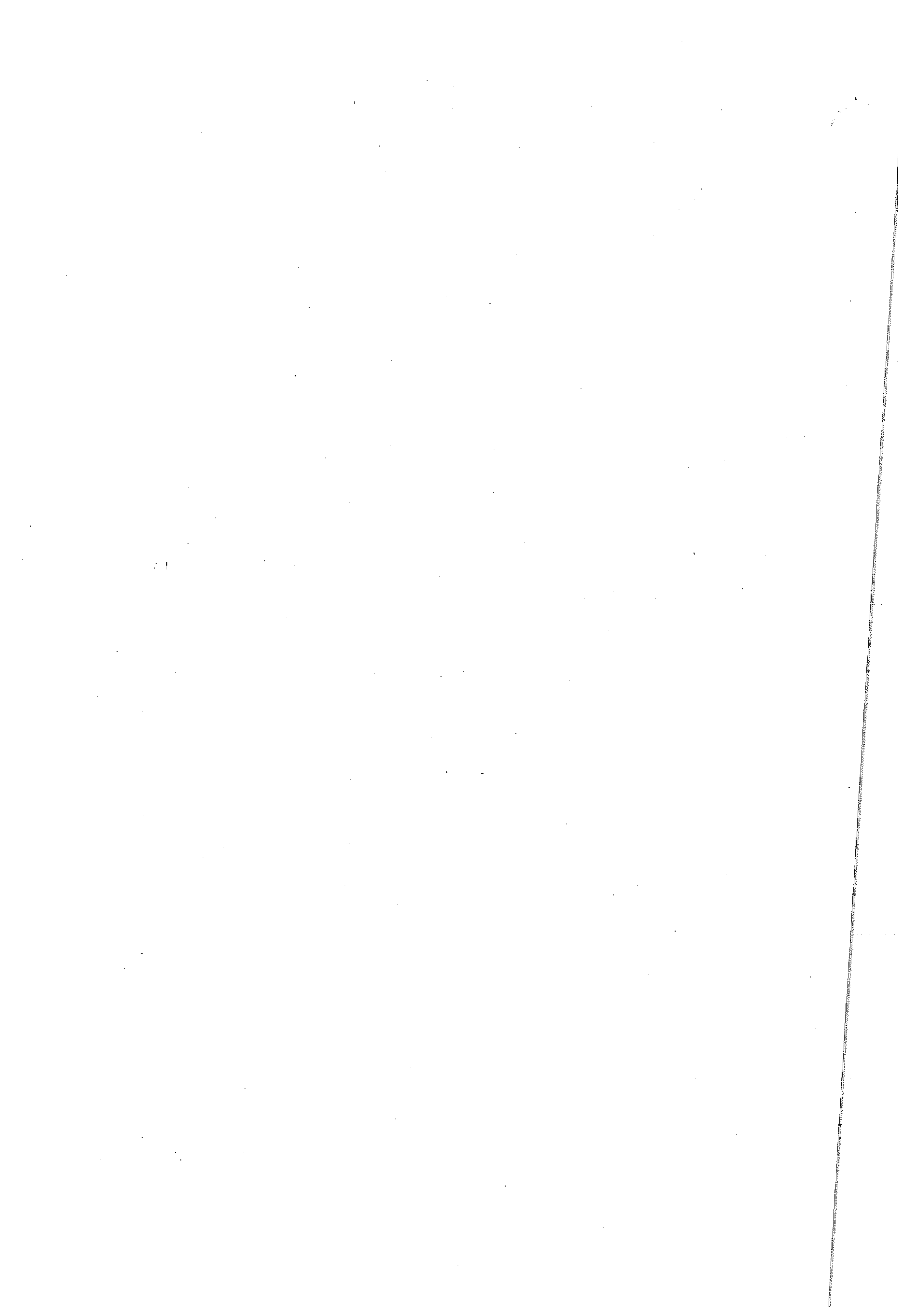
Discuss in short advantages and disadvantages of these methods .

3. How do you diagnose a case of primary open angle glaucoma?

Q.2. Write short notes on following (any six)

(60)

- (a) Parameters of an eye of a normal new born baby.
 - (b) Vitreous floaters
 - (c) Allergic conditions of eye
 - (d) Aging changes in a crystalline lens
 - (e) Penetrating keratoplasty
 - (f) Subluxated lens
 - (g) Ocular manifestations of Diabetes mellitus
-



Master of Optometry-II Examination
Applied Optics and Professional Optometry

Date : 09-04-2019, Tuesday]
Time : 3 Hours]

[Max. Marks : 100

- Instructions :** (1) Figure to the right indicate marks.
(2) Write legibly.
(3) Draw diagrams wherever necessary.
(4) Use separate answer book for each sections.

SECTION-1

- **ANSWER THE FOLLOWING QUESTION IN DETAIL (ANY-2) 20X2=40 MARKS**

1. Write in detail about the methods by which you can measure the amplitude of accommodation clinically. Comment on their relative advantages and disadvantages. Describe your plan of evaluation and management for a patient who is suspected for having convergence insufficiency and referred to you
2. Write in detail about changes in refraction with age. What are the various theories about Myopia progression? Comment on various newer available optical and pharmacological treatment options for progressive myopia.
3. Explain retinoscopy under following:
 - a. Optics
 - b. Procedure
 - c. Causes for inaccurate findings
 - d. Straddling

SECTION-2

- **ANSWER THE FOLLOWING QUESTIONS IN BRIEF (ANY-6) 10X6=60 MARKS**

1. What is Incidence, Prevalence and Point prevalence? Write in detail about Active and Passive Emmetropization process.
2. What is spectacle magnification and relative spectacle magnification? Write a short note on Knapp's law and its clinical implication.
3. What is a higher order aberration and how does it effect on retinal image quality? Can higher order aberrations be corrected? Write a short note on Hartmann-shack principle.
4. How chemically toughened lenses different from heat toughened lenses? Compare the optical and physical properties of various available ophthalmic lens materials.

P.T.O

0419E167(2)

5. Write in short about Progressive addition lenses on following headings-
 - A. Temporary markings and its importance
 - B. Permanent markings and its importance
 - C. Hard and soft design

 6. Describe your optometric plan of management for the following sports personal
(Consider both the sports person has significant refractive error)
 - A. A Swimmer
 - B. A Cricketer

 - 7: Discuss the role of optometrist as a primary eye care professional for the benefit of the Society. Discuss in short about pros and cons of selling of visual aids through online portals.
-

Master of Optometry-II Examination
Binocular Vision, Orthopecics & Low Vision Aids

[Max. Marks : 100]

Date : 05-04-2019, Friday]
 Time : 3 Hours]

- Instructions :** (1) Figure to the right indicate marks.
 (2) Write legibly.
 (3) Draw diagrams wherever necessary.

Answer any two (2 x 20)

1. Classify Esotropia in detail and write the clinical characteristics of each one of them
2. What is stereogram card? Explain the procedure involved in it? Who are the patients best suited for the procedure?
3. A lady of 30 years comes to your clinic with headache especially in the evening. Clinical evaluation gives the following findings

Distance VA OD 6/6p

OS 6/6p

Dry retinoscopy OD +/-0.75X180

OS +/-0.50X180

Wet retinoscopy OD +0.50/-0.75X180

OS +0.50/-0.50X180

Acceptance OD +0.50/-0.75X180 (6/6)

OS +0.50/-0.50X180 (6/6)

Duochrome is balanced in both eyes

NPC

Break:6 cm

Recovery:8 cm

NPA

Break

Recovery

OD

14cm

16 cm

OS

16 cm

18 cm

OU

14 cm

16 cm

NRA

+1.75 Ds

PRA

-3.75 Ds

Accommodative Facility:

OD

6 cpm

OS

8 cpm

CP. T. O.

0419E120 (2)

OU 6 cpm

Vergence Facility: 14 cpm

What will be your further management?

Answer any six (6 x 10)

1. Explain in detail the management procedures in Computer vision syndrome
 2. Explain with example how the magnification of a telescope is calculated. Explain with optical diagram how a telescope can be used to focus near objects.
 3. Write a note on various computer assisted low vision devices
 4. What is Diplopia. Classify it. Enlist the various causes of diplopia.
 5. Write a short note on Graves Ophthalmopathy
 6. Enlist the various vision therapy procedures for amblyopia. Describe in details any binocular therapy for amblyopia
 7. What are the advantages and disadvantages of logMAR visual acuity chart over Snellen's chart for low vision patients
-