

**B.Sc. (Fire & Safety) (Sem.-VI) Examination**  
**Fire Safety Risk Assessment & Management**

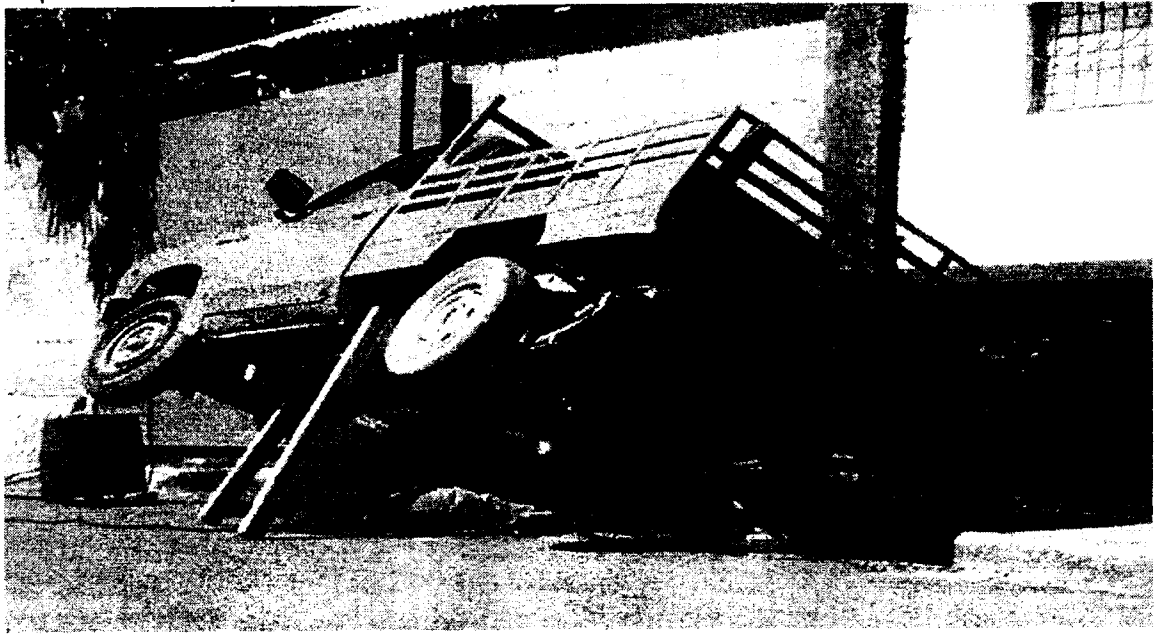
Time : 3 Hours]

April-2017

[Max. Marks : 70

- Q-1 [A]** How ERICPD helps you for risk controlling? Explain each with examples. 7
- OR**
- Q-1 [A]** Explain Reasons to manage safety in a work place? 7
- Q-1 [B]** List out the steps of risk assessment and explain each step with examples. 7
- OR**
- Q-1 [B]** Explain the process of HIRAC with its all requirements? 7
- Q-2 [A]** If you are a maintenance engineer of oil refining unit and you got a call from the pumping station that two of their pump in the station which are used to pump crude oil for the distillation are break down and you need to repair it as soon as possible. As team leader, you're responsible for deciding on and implementing control measures to protect the workforce from the hazard. Put the hierarchy of control for the given condition. 7
- OR**
- Q-2 [A]** List out the hazards and its consequences of given situation 7
- 
- Q-2 [B]** Prepare the risk assessment form for the oil tanker loading and unloading area. 7
- OR**
- Q-2 [B]** Prepare the risk control form for the electrical maintenance work. 7
- Q-3 [A]** List out the Types of Risk and explain any one. 7
- OR**
- Q-3 [A]** Explain FMEA and give its advantages & disadvantages? 7
- Q-3 [B]** Explain Risk Management with its functions. 7
- OR**
- Q-3 [B]** Explain Fire safety policy for an organization. 7
- Q-4 [A]** Explain safety check list with its advantages and disadvantages. 7
- OR**
- Q-4 [A]** What are the three techniques used to reduce the risk with example? 7
- Q-4 [B]** Explain the likelihood of a hazardous event and Severity of the hazardous event with examples? 7
- OR**

Q-4 [B] Prepare Hazard Analysis Checklist for below unsafe condition



Q-5 Give the answer of following questions. Each carries one mark.

14

- 1 In the case of the 5 x 5 matrix if your risk level is 12, what should be your consideration to control it?
 

A Stop the activity and make immediate improvements	C Look to improve within specified time
B Look to improve at next review of an assessment	D no further action required
- 2 Demonstrating that the organisation cares about staff safety and health is \_\_\_\_\_ reason to manage safety in a work place.
 

A Moral	C Financial
B Legal	D All
- 3 Providing a guard on a rotating part of machine will reduce
 

A Reducing the likelihood	C Reducing the severity
B Reducing the consequences	D Reducing Both Likelihood and consequence
- 4 Giving regular interval to those who are exposed to high noise instead of keep them full time in high noise area is
 

A Elimination	C Isolation
B Reduction	D Illumination
- 5 If it is not practical to close the road or slow the traffic then as per ERICPD what is the next step to reduce the hazard?
 

A Apply safe system of work	C Reducing speed of vehicle
B Provide Barricading	D Providing Personal Protective Equipment
- 6 Where there are hazards with high likelihood and low consequence what you have to do?
 

A Active monitoring	C Good housekeeping
B Emergency Planning	D Regular review
- 7 Yellow coloured signs giving indication about
 

A Prohibition	C Warning
B Mandatory things	D Emergency
- 8 In the case of the 3 x 3 matrix if your risk level is 4 then your risk level is at
 

A Unacceptable	C Adequate
B Tolerable	D Acceptable
- 9 What is reduction?
- 10 What is Consequence of hazardous event?
- 11 What is risk assessment?
- 12 What is HSE Plan?
- 13 Give Full Form of HAZOP,FMEA, FTA
- 14 When you have to review your risk assessment?